



Winter 2024/2025

THE COUNTY QUARTERLY

WASTE AND RECYCLING NEWSLETTER

Sponsored by Burrtec Waste Industries for San Bernardino County Residents

Contact Information

Burrtec Waste Industries

5455 Industrial Parkway
San Bernardino, CA 92407

Automated Payment Service

(888) 298-5161

Customer Service

(909) 889-1969

Hours of Operation

Monday-Friday
8:00 am to 5:00 pm

Website

Burrtec.com

Follow us on



Holiday Schedule

No service on these holidays

Memorial Day | Independence Day

Labor Day | Thanksgiving Day

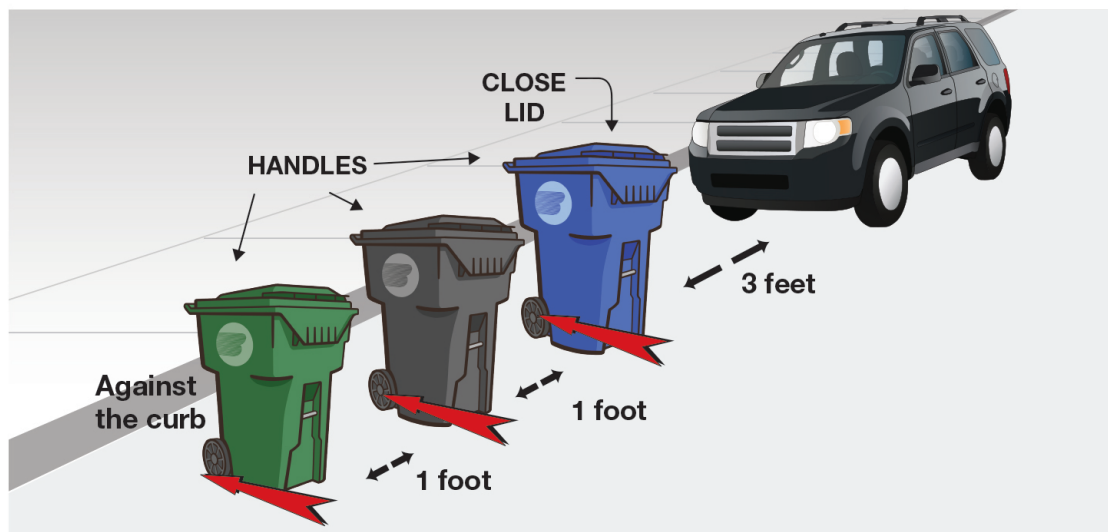
Christmas Day | New Year's Day

When the holiday falls on a weekday, collections for the remainder of the week will be delayed by one day. There is no service interruption or delay when the holiday falls on a Saturday or Sunday.

Collection Day Reminder

On collection day, please place your containers in the street, at the curb, or near the corner of your driveway. Handles of your containers should be facing your home. Containers should be placed 1 foot apart from each other and need to be placed at least 3 feet away from any obstruction such as a fence, mailbox, or vehicle.

All containers must be curbside by 6:00 a.m. on your service day.



Tear off here, save and place on your fridge!

YOUR BARREL GUIDE - WHAT GOES WHERE?

Black Barrel is for trash



Blue Barrel is for recyclables



Green Barrel is for green waste



DO NOT ADD HAZARDOUS WASTE

BLACK BARREL GUIDE

YES

- ✓ Cactus
- ✓ Clothing
- ✓ Diapers
- ✓ Dishware
- ✓ Flower pots
- ✓ Food waste
- ✓ Hoses
- ✓ Palm fronds
- ✓ Plastic bags
- ✓ Pet waste
- ✓ Plastic bags or wrap
- ✓ Plastic toys
- ✓ Plastic utensils
- ✓ Shrink wrap
- ✓ Straws
- ✓ Window glass
- ✓ Wipes

NO

- ✗ Batteries
- ✗ Electronic waste
- ✗ Hazardous waste
- ✗ Hot ashes
- ✗ Flammables
- ✗ Fluorescent bulbs
- ✗ Landscape waste
- ✗ Livestock manure
- ✗ Machinery
- ✗ Paint
- ✗ Pesticides
- ✗ Oil
- ✗ Recyclables
- ✗ Sharps
- ✗ Tires

DO NOT BAG RECYCLABLES

BLUE BARREL GUIDE

YES

- ✓ Aerosol cans (empty)
- ✓ Aluminum cans
- ✓ Brochures
- ✓ Cardboard
- ✓ Cartons
- ✓ Catalogs
- ✓ Computer paper
- ✓ Envelopes
- ✓ Glass bottles & jars
- ✓ Junk mail
- ✓ Newspaper
- ✓ Paper products
- ✓ #1 - #7 Plastics
- ✓ Tin cans
- ✓ Tissue boxes
- ✓ Wrapping paper

NO

- ✗ Batteries
- ✗ Bubble wrap
- ✗ Carpet
- ✗ Ceramic dishes
- ✗ Clothing
- ✗ Diapers
- ✗ Electronic waste
- ✗ Furniture
- ✗ Hazardous waste
- ✗ Hoses
- ✗ Mirrors
- ✗ Pet food bags
- ✗ Pizza boxes, soiled
- ✗ Plastic bags or wrap
- ✗ Plastic toys
- ✗ Stuffed animals
- ✗ Used paper products
- ✗ Wax paper

DO NOT BAG GREEN WASTE

GREEN BARREL GUIDE

YES

- ✓ Dead plants
- ✓ Flowers
- ✓ Grass clippings
- ✓ Leaves
- ✓ Prunings & twigs
- ✓ Shrub trimmings
- ✓ Small branches
- ✓ Untreated wood
- ✓ Weeds

NO

- ✗ Batteries
- ✗ Cactus
- ✗ Concrete
- ✗ Dirt
- ✗ Electronics
- ✗ Flammables
- ✗ Glass
- ✗ Hazardous waste
- ✗ Liquids
- ✗ Livestock manure
- ✗ Metal
- ✗ Pet waste
- ✗ Plastic
- ✗ Rocks

The Holidays are Soon Approaching

Burrtec will collect and recycle Christmas trees from single-family residences. Please place your tree at curbside after Christmas on your collection day. Burrtec will provide this service for approximately 3 weeks after Christmas Day. Trees 6' and over need to be cut in half. Please take all ornaments, lights, and metal stands off of the tree. Flocked and Non-Flocked trees will be collected and recycled.



Extra Holiday Waste

Approximately 80% of your holiday trash is recyclable. All gift boxes, wrapping paper, greeting cards, and cardboard packaging are items that may be placed in your recycling barrel. Burrtec will collect your excess holiday trash and recyclables. Beginning the day after Christmas for approximately 1 week, place excess holiday trash/recyclables in bags alongside your containers on your collection day.



Get a Free Doggie Waste Bag for You and a Friend

Step 1: Visit FreeDoggieBags.com

Step 2: Request a **FREE** canister from us

Step 3: Send a **FREE** canister to a friend

Step 4: Use your canister to pick up after your dog anytime, anyplace!

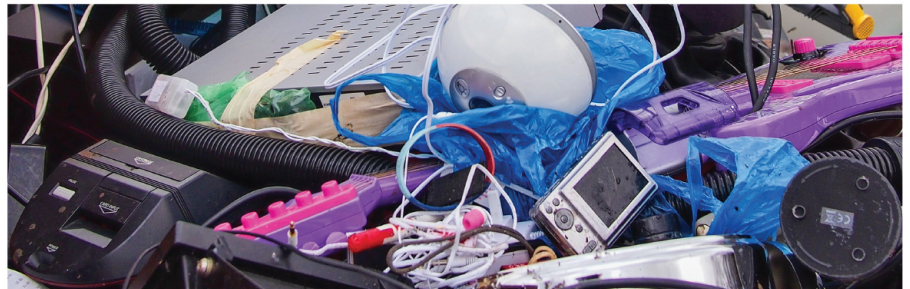


Thanks for being a responsible pet owner and contributing to a beautiful San Bernardino County.

Electronic Waste (E-waste)

Electronic waste may contain potentially toxic substances such as lead, copper, and other heavy metals. This is why they must be disposed of properly! Electronic waste, or E-waste, may include computers, monitors and televisions. Residents may place E-waste items out as bulky items for pickup. Please do not place E-waste in any of the barrels.

Please call our Customer Service Department one week prior to your scheduled collection day to arrange pick-up.



FREE CHRISTMAS TREE MULCH

Available mid-January to mid-February or *while supplies last.*

Burrtec's Material Recovery Facilities (MRF) offer FREE Christmas tree mulch. The Christmas tree mulch is provided on a first come, first serve basis. Mulch is available while supplies last. New stock is replenished daily. Other landscape products such as compost, mulch and wood chips are also available for purchase.

AGUA MANSÁ TRANSFER STATION/MRF

Address: 1830 Agua Mansa Road, Jurupa Valley, CA 92509 | **Telephone:** (951) 786-0544

Hours: Monday - Friday, 7am - 6pm | Saturday 7am - 4:30pm | Sunday 8am - 3pm

WEST VALLEY TRANSFER STATION/MRF

Address: 13373 Napa Street, Fontana, CA 92335 | **Telephone:** (909) 899-0911

Hours: Monday - Friday, 7am - 6pm | Saturday 7am - 3pm | Sunday 8am - 3pm